



USA CYCLING
SCNCA
 SOUTHERN CALIFORNIA - NEVADA CYCLING ASSOCIATION
BikeReg **MASTERS & ELITE MEN & WOMEN**
STATE CHAMPIONSHIPS
SEPTEMBER 19, 2021
VICTORVILLE CA
 Permit Held Under 2021-4320

Category	Start	Laps/Miles	CASH or Prizes	Places	Field Limit	PRE REG	Same Day
State Championships Masters 35-39 / 40-44 1-3*	8:00am	10/60	Medals	3/3	120	\$45	\$55
State Championships Masters' 50-54 / 55-59 1-4*	8:05am	10/60	Medals	3/3	120	\$45	\$55
Women Cat 4/5	8:10am	7/42	Medals	3	75	\$45	\$55
State Championships Masters 45-49 1-3	10:45am	10/60	Medals	3	120	\$45	\$55
State Championships Pro Women 1/2/3*	10:48am	10/60	\$500 Medals	8 3/3/3	110	\$45	\$55
State Championships Elite Men Cat 3	10:52am	10/60	Medals	3	100	\$55	\$55
State Championships Pro Men 1/2*	1:40pm	14/84	\$500 Medals	8 3/3	140	\$55	\$65

Pro Men & Women Race together Scored Separately
Championships Men 1 & 2 Women 1,2 & 3

The Championships are open only to riders who hold USA Cycling annual licenses and reside within the SCNCA district. The Championships are open to riders who are permanent residents (green card) with a valid USAC license or US Citizens with a USA racing nationality and a valid USAC license.

Women are not eligible for medals in men's events.

The Championship event may include riders who are ineligible for the championship but medals will be awarded to only riders who are eligible.

Members of UCI road teams are not eligible for road championships unless there is a separate class for them.

See USAC rule 7J3 in the USAC rulebook available here; https://s3.amazonaws.com/usac-craft-uploads-production/documents/USACycling_RuleBook_5_21.pdf

EQUAL PAYOUTS for Men's and Women's PRO-1,2,3! Guaranteed minimum base purse is \$500 for each Men and Women Fields. BONUS PAY for Men & Women PRO-1-2-3 categories for every rider in each respective field multiply each rider in that field by \$10 and add to base purse

Wheels in Wheels out Trucks will be available for all events

EQUAL PAYOUTS for Men's and Women's PRO-1,2,3! Guaranteed minimum base purse is \$500 for each Men and Women Fields. BONUS PAY for Men & Women PRO-1-2-3 categories for every rider in each respective field multiply each rider in that field by \$10 and add to base purse.

RULES AND COURSE: USAC category "D" race and all rules apply. Course is 6.5 miles course with good asphalt and rolling hill. Event director has the right to cancel or combined fields depending on field sizes, according to USAC Rules.

REGISTRATION: Opens at 7:00 am and one hour before each scheduled race, closes 10 minutes before each scheduled race time. Same day registration add \$10.00 late fee.. We encourage you to register online. We accept AMEX, MASTER CARD & VISA CREDIT CARDS with a \$3 Service Charge Thanks

Please note: Registration Closes the Wednesday.

Online Closes Wednesday September 15, 2021, at 11:59 MTN Time pm go to usacycling.org to register

Please make out all checks, Money orders to Majestic Cycling, We will be taking Credit Card service fee will apply Same day license will be available at registration booth. Same day waivers must be filled out by racers or parent/legal guardian for anyone 18yrs or younger.

USAC License Required. Annual licenses available at www.usacycling.org USAC 1-Day Beginner's license: \$10/day, only for Category 5 Men, Women or Juniors. Can be purchased online at www.usacycling.org/events/?state=CA, select appropriate event, and then click on Purchase One-Day License. Bring receipt to race. USAC 1-Day Experienced license: \$25/day, available to all former USAC Category 1-4 racers. Must be purchased online, prior to event.

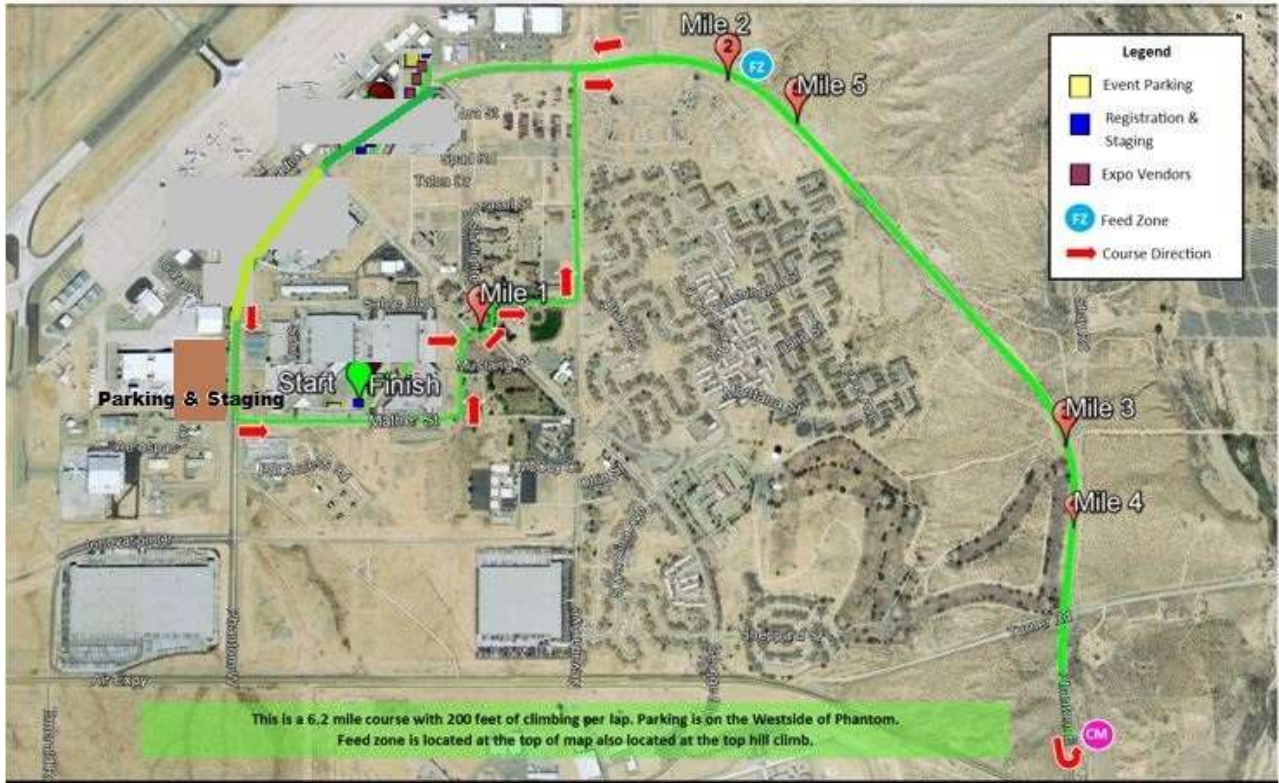
FEES: Fees include USAC Insurance and SCNCA Surcharge: **Extra races \$15** must pay higher race fees first.

DIRECTION: Location 18374 Phantom West / 15 Freeway N or S exit D St go west toward Air Express Dr. make a right to Phantom West follow to event parking.

KATHY SANCHEZ
Realty Masters
& Associates
951-206-6629

Victorville

Road Race Course



INCYCLE  BICYCLES



DIRECTORS INFO: Alfie Sanchez 909-297-6353 or email alfiesanchez@aol.com